

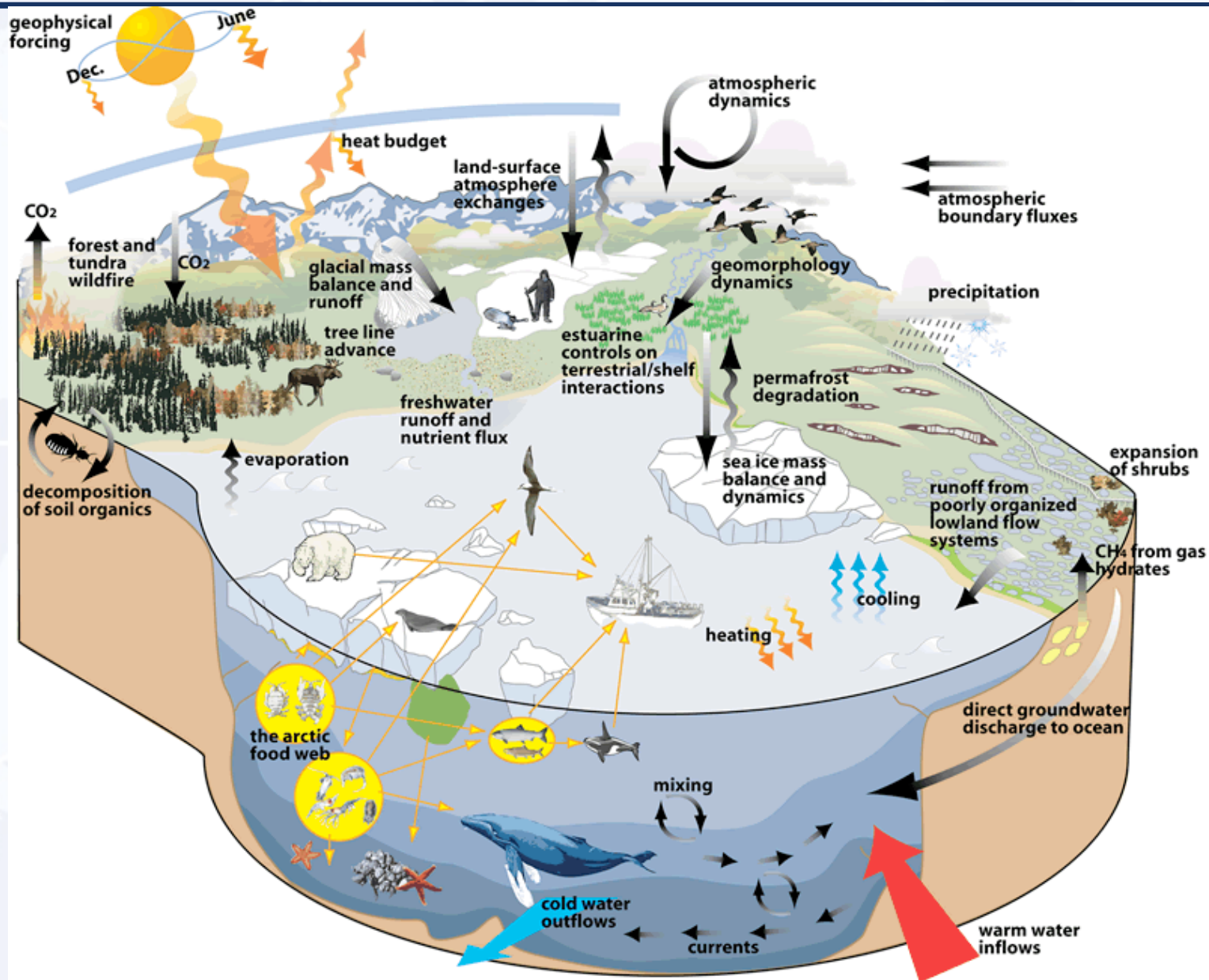
What Is the Arctic Research Consortium of the United States (ARCUS)?

Robert H. Rich, Ph.D., CAE, Executive Director



ARCUS: More than 25 Years of Connecting Arctic Research

The Arctic is a Complex, Interdependent System



Source: SEARCH, 2005

Understanding the Arctic Requires Connecting Across Boundaries

Sector Boundaries

- Academic
- Government
- Industrial
- Indigenous
- Non-Governmental Organizations
- Public and Society

Geographic Boundaries

- International / Circumpolar (National Boundaries)
- Arctic Residents / Global Population (Regional Perspectives)

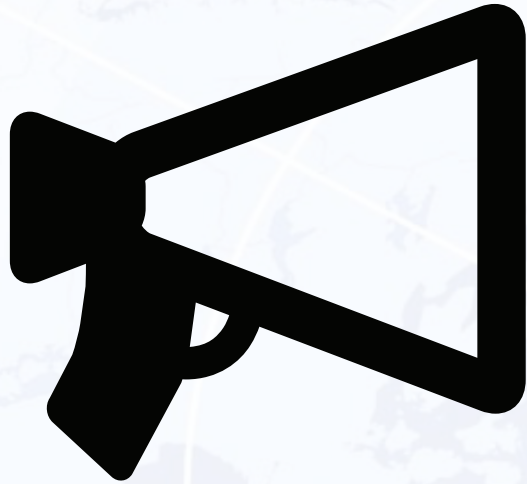
Disciplinary Boundaries

- Physical Science
- Life / Natural Science
- Engineering
- Social Science
- Education
- Community Development

Photo by Robyn Staup (PolarTREC 2007)



What Does “Connecting Arctic Research” Mean?



- **Communication**

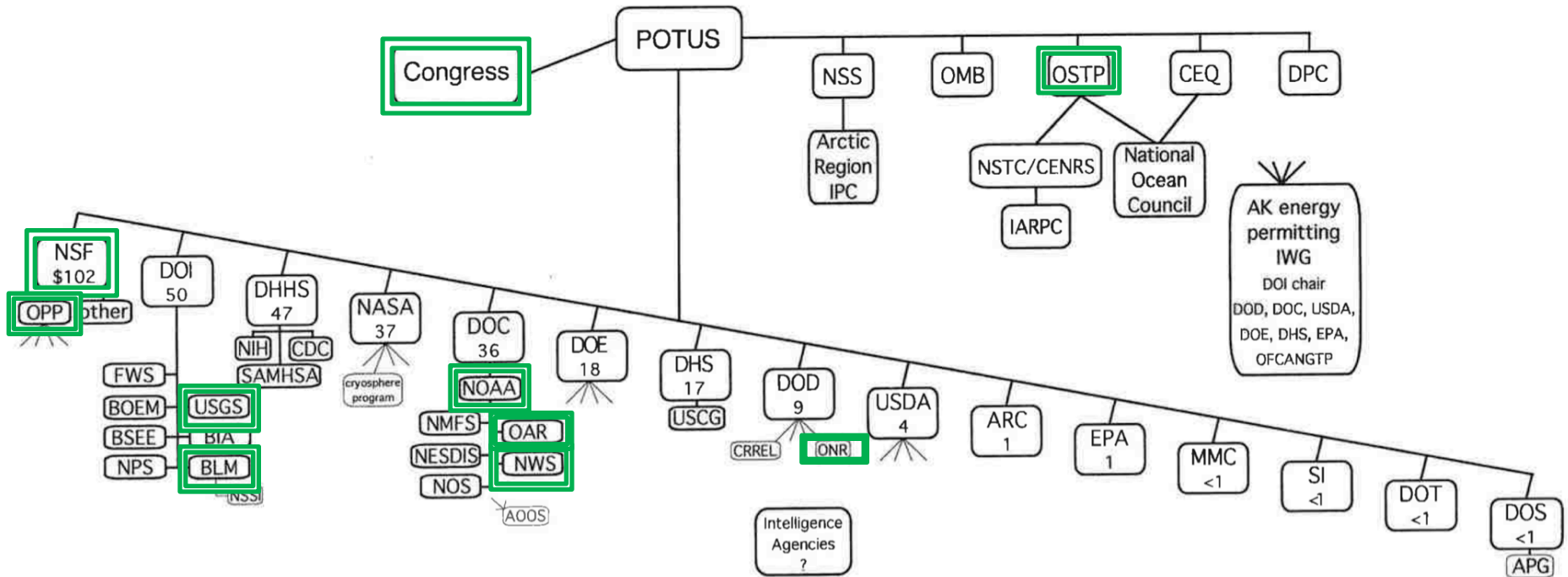
- **Coordination**



- **Collaboration**

Understanding the Arctic Requires Connecting Across Boundaries

Arctic research in the Federal government



Budget figures, in million \$, are for FY05, as self-reported by IARPC members and reported in "Arctic Research of the US" vol. 20, published by NSF in 2006

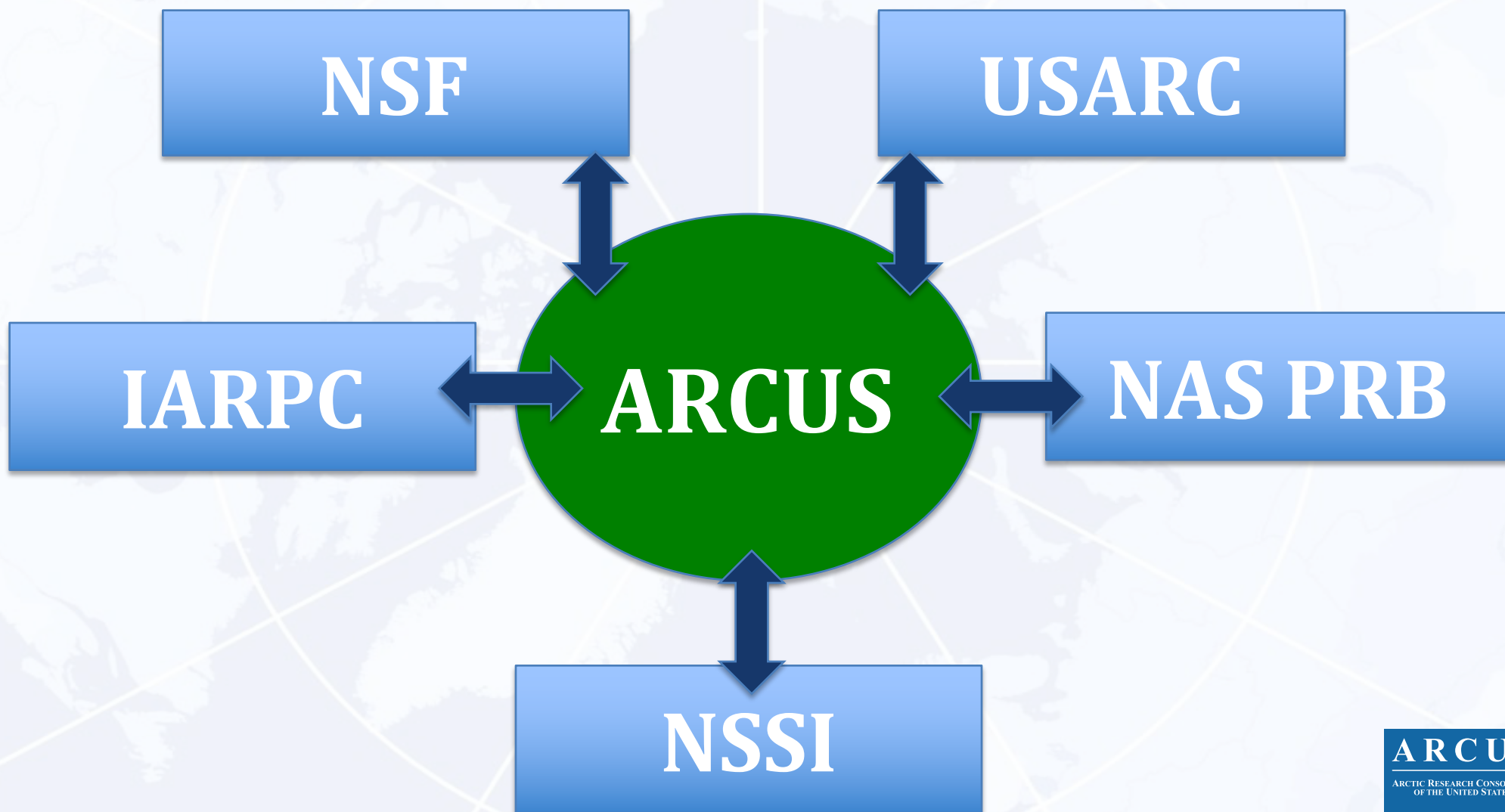
Source: John Farrell, USARC, 2011

Who We Are

- A Consortium of 30 of the leading Arctic research organizations around the U.S. and the world
- A growing association with 54 individual members
- An engaged Board of Directors
- A dedicated team of 13 professionals spread throughout Alaska, D.C., and five other U.S. states
- Many teams of volunteers making things happen
- A grantee of the U.S. National Science Foundation and other agencies
- Dedicated to **“Connecting Arctic Research”** since 1988



Key ARCUS Partners in the U.S.



Communication: Electronic

ArcticInfo

Community job, meeting, and resource announcements
More than 6,000 subscribers – **You could be one**

Witness the Arctic

Publication issued 3 times per year
More than 12,000 subscribers – **You could be one**

Directory of Arctic Researchers

Online resource for scientific contacts and collaborators
Contains more than 4,000 individuals – **Are you included?**

Arctic Calendar

Community events schedule
Over 60 events currently posted – **Is your event listed?**

Other ARCUS Communication Vehicles

Twitter: @ArcticResearch
Polar Education Email List, Web-Based Resources, Images, Videos
You can subscribe and explore

Photo by Tech. Sgt. Donald L. Wetterman, USAF

ARCUS
ARCTIC RESEARCH CONSORTIUM
OF THE UNITED STATES



Communication: Meetings

- **Community Knowledge Exchange Workshop:**
Impacts of Arctic Sea Ice Loss
- **White House Arctic Science Ministerial Side Event**
- **AGU Fall Meeting: Arctic Community Meeting Rooms**

Request space at www.arcus.org/communitymeetings/agu/2016

- **Permafrost Methane Synthesis Workshop**
- **ASSW 2017 Panel**

Multiple knowledge systems to understand a dynamic Arctic

- **Arctic Research D.C. Seminar/Webinar Series**

Bringing the latest, most significant Arctic research results to the D.C. community and the world

November 30 – Dr. Hajo Eicken

Sign up at www.arcus.org/research-seminar-series

Photo by ARCUS staff.

ARCUS
ARCTIC RESEARCH CONSORTIUM
OF THE UNITED STATES



Communication: Informal Meetings and Conversations:

At ARCUS, we work to:

- Promote communication, coordination, and collaboration
- Apply resources to advance the research
- Connect organizations, individuals, and activities
- Inform participants about other related activities
- Trigger creativity and innovation
- Support IARPC awareness, capacity to engage
- Help in outreach and education
- Understand concerns and challenges, bring other resources to bear

Bottom Line: The community is often fragmented and ARCUS can provide connections across boundaries.

Photo by Christina
Galvan
(PolarTREC 2010)



Coordination: Sea Ice Prediction Network

Sea Ice Outlook & Sea Ice for Walrus Outlook



Photo by Cristina Galvan (PolarTREC 2009)

- Ever-increasing record numbers of submissions each month to Sea Ice Outlook
- Produces reports in June, July, and August each year

- Collaborative project with NWS, NOAA, coastal Arctic communities
- Exploring expansion to other places



Photo by Dave Withrow, Courtesy of Robyn Staup (PolarTREC 2007)

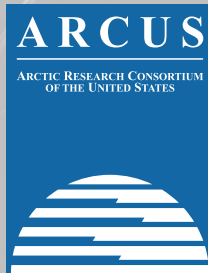
Collaboration: Study of Environmental Arctic Change (SEARCH)

- Generates and synthesizes **research findings**
- Identifies **emerging issues** in Arctic environmental change.
- Provides **scientific information** to stakeholders
- **Facilitates research** activities, supports decision-makers.
- Collaborates with **national and international** programs.
- Regularly solicits **research community input**.

Current SEARCH Focus Areas

- **Sea Ice:** Communicating what matters
- **Land Ice/Glaciers/Greenland Ice Sheet:** Coordinating measurement of what matters
- **Permafrost:** Synthesizing what matters for Carbon, Infrastructure, and Landscapes/Ecosystems
- **Planned:** Coastal Resilience, Arctic Future Scenarios

Photo by Ute Kaden (TREC 2005)



Collaboration: Educational

PolarTREC

- Invigorating polar science education and understanding by bringing K-12 educators and polar researchers together
- More than a decade of positive impact on researchers, teachers, students, the public
- Opportunities open for 2017-2018

The Arctic in the Classroom

- Connecting Arctic Alaska teachers, their students and communities with research

Photo by Lauren Watel, Courtesy of Regina Brinker (PolarTREC 2014)

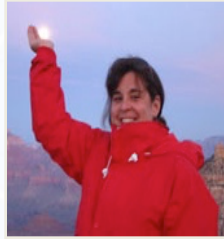
ARCUS
ARCTIC RESEARCH CONSORTIUM
OF THE UNITED STATES



ARCUS Team



ADA BOWER
Business Manager
2008



JUDY FAHNESTOCK
Project Assistant
2008



MILA MALYSHEVA
Accountant
2016



BRIT MYERS
Project Manager
2015



RONNIE OWENS
Director of Web Development
2004



JOED POLLY
Video/Online Media
2001



ZEB POLLY
Systems
Administrator-2000



ROBERT RICH
Executive Director
2015



LISA SHEFFIELD-GUY
Project Manager
2015



STACEY STOUTD
Administrative Assistant
2016



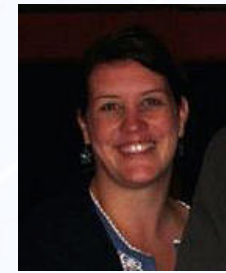
BETSY TURNER-BOGREN
Project Manager
2010



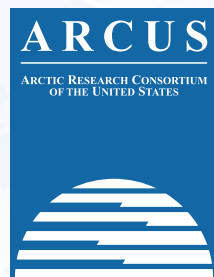
JANET WARBURTON
Project Manager
2000



HELEN WIGGINS
Director of Programs
2003



JENNIFER ZOLKOS
Director, Community
Development - 2016



Scientific Cooperation

- The Arctic research community needs to work across all of the many boundaries
- ARCUS is here to help support this communication, coordination, and collaboration

- You are invited to join with us in “Connecting Arctic Research”

Photo by Robert Harris (PolarTREC 2007)

ARCUS
ARCTIC RESEARCH CONSORTIUM
OF THE UNITED STATES

